



Changing the Healthcare-seeking Behaviour of Chronic Disease Patients

Choo KL(1), Cho KY(1), Cheung NY(1), Chan YY(2), Tsang HC(2), Chan YF(3), Kwok SL(3), Chim CK(4), Leung V(5), Lam WK(1), Lau E(1), Tong M(1), Tang WF(3), Siu A(3), Kitchell A(3), Chow KC(2), Ko F(5), Wong KK(1), Tam S(6), Man CY(7)

(1)Department of Medicine, (2)Physiotherapy Department, (3)Accident & Emergency Department, (4)Community Outreach Services Team, (5)Occupational Therapy Department, (6)Nursing administration, (7)HCE, North District Hospital, NTEC

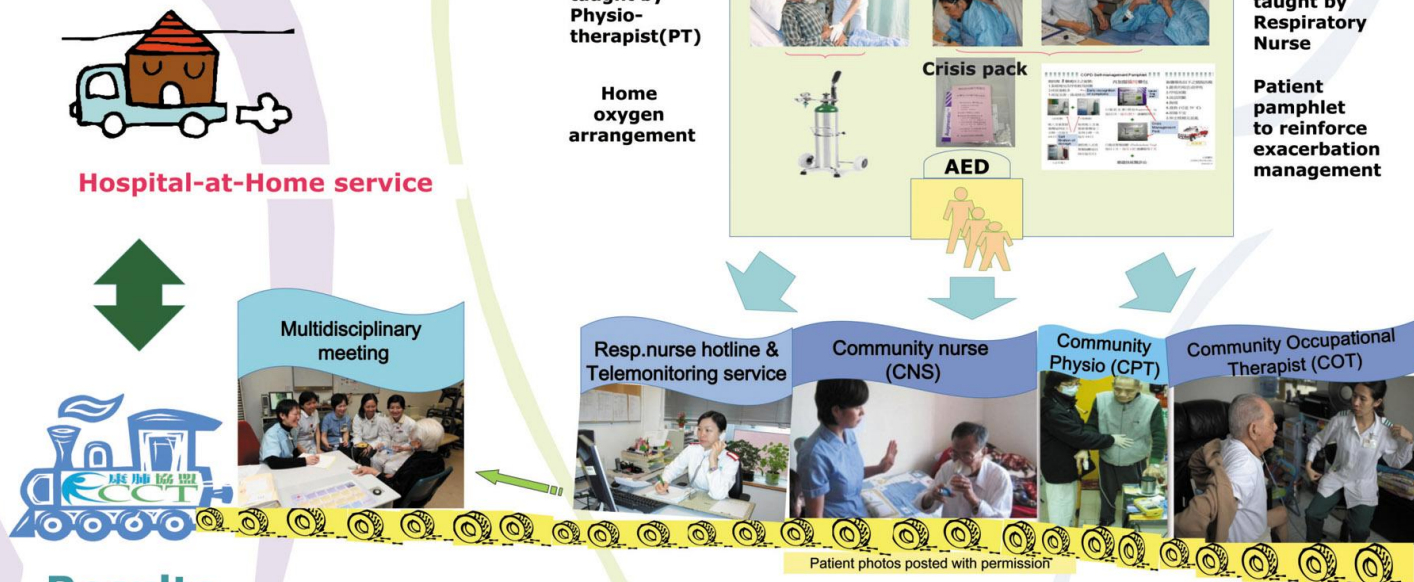
Introduction

Chronic Obstructive Pulmonary Disease (COPD) patients commonly report experiencing impending doom during a serious attack of shortness of breath. This fearful sensation often drives them to seek help at the Accident & Emergency Department (AED). To break this vicious cycle, Respiratory Collaborative Care Team (RCCT) consisting of respiratory physicians, nurses and allied health colleagues decided to extend its services to COPD patients encountered in AED Observation Ward.

Objectives

- To empower COPD patients in exacerbation management
- To reduce hospital admissions

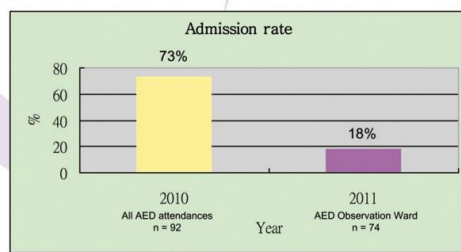
Methodology



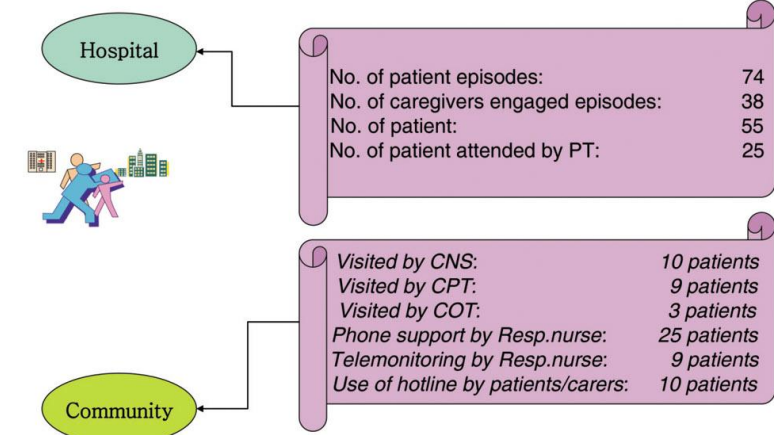
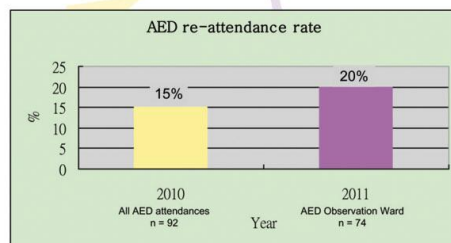
Results

RCCT service in AED between 24 January and 22 February 2011

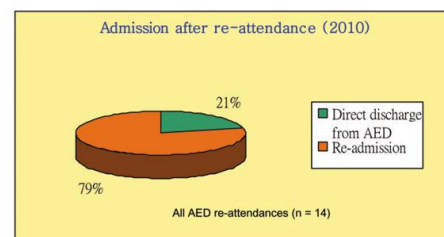
AED admissions for COPD in 2010 and 2011



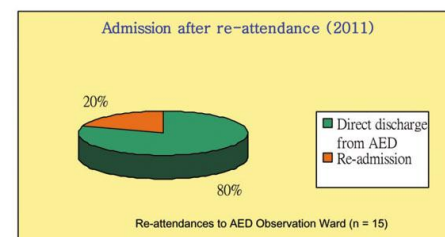
AED re-attendance for COPD in 2010 & 2011



Admission rate after AED re-attendance in 2010



Admission rate after AED re-attendance in 2011



Conclusion

Through collaboration with AED colleagues, early RCCT intervention to teach exacerbation management and a comprehensive community care pathway consisting of multidisciplinary home visits and telemedicine support, patients' readiness for self-management was enhanced and hospital admission could be reduced.

